

# Northern Ireland Council for voluntary action Staying out of lockdown, return to premises

Camilla Mackey – HSENI - 22<sup>nd</sup> July 2020



**What can organizations practically do in order to either reopen their business or upgrade their current Covid-19 controls?**



- Complete a risk assessment – common sense required, just keep it simple....you can do it!
  - Help people to work from home, where possible
  - Develop or enhance cleaning, handwashing and hygiene procedures
  - Maintain 2m social distancing, where possible
  - Where people cannot be 2m apart, manage transmission risk
  - Signage
  - Communication
  - Supervise, Supervise, Supervise!
-

## Other Areas for consideration....

- Remember PPE is not a silver bullet
  - Face Coverings
  - Areas where people gather e.g. smoking areas, car parks
  - Contact details for staff/volunteers/visitors - track and trace
-

# Where to go for help and advice

## *HSENI*

Telephone advice line: 0800 03201212

<https://www.hseni.gov.uk/topic/covid-19-advice-and-guidance-places-work>

## *NI Government*

<https://www.nidirect.gov.uk/articles/coronavirus-covid-19-advice-workers>

## *Public Health Agency NI*

Telephone advice line: 0300 555 0114

<https://www.publichealth.hscni.net/>

---

**Health and Safety Executive for Northern Ireland**  
**83 Ladas Drive, Belfast, BT6 9FR, Northern Ireland**

Telephone: (028) 9024 3249

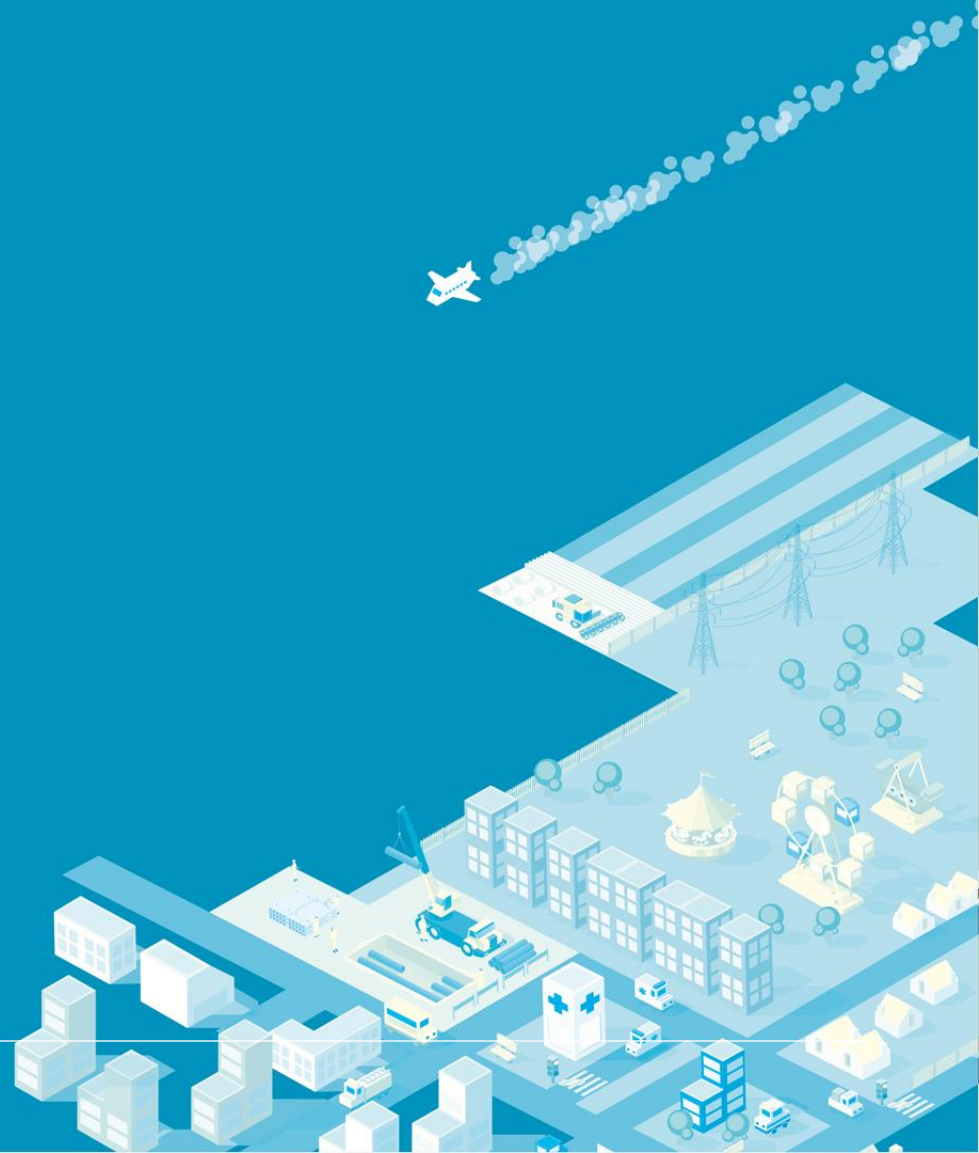
Helpline: 0800 0320 121

Textphone: (028) 9054 6896

Facsimile: (028) 9023 5383

Email: [mail@h seni.gov.uk](mailto:mail@h seni.gov.uk)

Web: [www.h seni.gov.uk](http://www.h seni.gov.uk)



# **COVID-19 STAYING OUT OF LOCKDOWN RETURN TO PREMISES**

22 JULY 2020

**David Abrahams & Matthew Couchman**  
Marsh Belfast & Marsh London

# Return to Premises: Insurance considerations and update



## Current Insurance Position

- Current Losses
- Court Case
- Current Insurer Actions



## The Future – What does it look like

- Future Potential Claims
- Risk Management – return to work



Organisations need to begin planning now in order to achieve the safe, assured return they are aiming for



# Risk assessment – recovery areas for consideration



## HEALTH AND SAFETY

- Availability of personal protective equipment (PPE) for workforce, volunteers, etc.
- Training requirements for workforce.
- Specific COVID-19 H&S risk assessment.
- Volunteer management – availability of at risk groups.
- Regularity of cleaning and sanitising operations.
- Signage requirements.
- Additional hand washing and sanitising facilities for workforce and the public.



## EVENT OPERATIONS

- Employees / volunteer availability.
- Staff wellbeing post lockdown.
- Pre-event health checks.
- “New normal” work practices.



## VENUES

- Deep clean schedules.
- Density ratios / revised seating plans and limited capacity.
- Queuing arrangements.
- Maintenance schedules at venue including statutory inspections still up-to-date.



## CATERING

- Pre-packaged vs. self-service.
- Caterers to comply with safety requirements.
- Hygiene safety – increased standards / revised policies and procedures.
- Workforce training policy on standards, monitoring and compliance.



Marsh is one of the Marsh & McLennan Companies, together with Guy Carpenter, Mercer, and Oliver Wyman.

This document and any recommendations, analysis, or advice provided by Marsh (collectively, the "Marsh Analysis") are not intended to be taken as advice regarding any individual situation and should not be relied upon as such. The information contained herein is based on sources we believe reliable, but we make no representation or warranty as to its accuracy. Marsh shall have no obligation to update the Marsh Analysis and shall have no liability to you or any other party arising out of this publication or any matter contained herein. Any statements concerning actuarial, tax, accounting, or legal matters are based solely on our experience as insurance brokers and risk consultants and are not to be relied upon as actuarial, tax, accounting, or legal advice, for which you should consult your own professional advisors. Any modeling, analytics, or projections are subject to inherent uncertainty, and the Marsh Analysis could be materially affected if any underlying assumptions, conditions, information, or factors are inaccurate or incomplete or should change. Marsh makes no representation or warranty concerning the application of policy wording or the financial condition or solvency of insurers or reinsurers. Marsh makes no assurances regarding the availability, cost, or terms of insurance coverage. Although Marsh may provide advice and recommendations, all decisions regarding the amount, type or terms of coverage are the ultimate responsibility of the insurance purchaser, who must decide on the specific coverage that is appropriate to its particular circumstances and financial position.

Copyright © 2019 Marsh LLC. All rights reserved.